

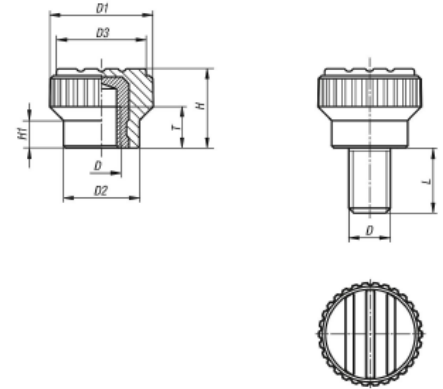
## 1011- Metal Detectable Knurled Knob

**Document Number: HSE 7428**

**Date Of Issue: 07/12/2023**

**Revision Number: 1**

**Date of Revision: 07/12/2024**



| Code             | Description                   |
|------------------|-------------------------------|
| 1011-T785-P02-01 | Metal Detectable Knurled Knob |

### Product description:

The metal detectable operating parts are made from a EU10/2011 and FDA conform plastic granulate.

Due to special additives to the plastic granulate, it is possible for metal detectors

(induction technology) to detect plastic particles from a size of  $0.027 \text{ cm}^3$  ( $3 \times 3 \times 3 \text{ mm}$ ). This means that in sensitive production sectors, e.g. foodstuff processing, plastic fragments of metal detectable operating parts can be identified and the risk of production downtimes or complaints are significantly reduced.

### Material:

Thermoplastic (fibreglass reinforced polyamide), metal detectable, EU10/2011 and FDA conform.

Steel parts stainless steel 1.4404.

Version:

Thermoplastic black-grey RAL 7021.

Steel parts bright stainless steel.

### Note:

The metal detectable additive can lead to partial colour variations in the plastic surface.

### Application:

- Foodstuff industry
- Pharmaceutical industry
- Packaging industry

### Temperature range:

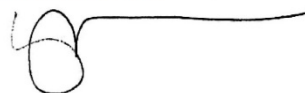
-20°C to +100°C.

Advantages:

Metal detectable.

Detections volume  $\geq 0.027 \text{ cm}^3$ . Foodstuff conform material.

No warranty is given or implied with respect to this information or patent infringement. Detectamet Ltd do not accept liability for loss or damage arising from the use of this information. Results are based on a test sample, our general experience and information from our suppliers. Data and results must be confirmed by the buyer by testing for its intended conditions of use.



**Helen Morrison**  
Group Managing Director

